



# Data Sheet

## Coaxial Relay CX-600N

### MECHANICAL CHARACTERISTICS :

Contact Arrangement	.....	SPDT
Operational Temperature	.....	- 25 °C to + 50 °C
Max Temperature Rise	.....	20 °C
Weight	.....	Approx. 230 g
Mounting	.....	Four screws
Cable Connections	.....	3x N type female connectors

### ELECTRICAL CHARACTERISTICS :

Impedance	.....	50 Ohms
Nominal Voltage	.....	12 V DC
Voltage Range	.....	10 V DC - 14 V DC
Current	.....	160 mA @12 V DC 20 °C
Coil Resistance	.....	75 ±10% Ohms @ 20 °C

### RF-PROPERTIES :

Frequency	VSWR	Isolation	Ins. Loss	RF Power input
MHz	max	-dB(min) ±3 dB	-dB(max)	W (PEP)
50	1.03	60	0.07	1000
150	1.10	48	0.10	1000
500	1.15	37	0.15	800
1000	1.20	28	0.20	500
1500	1.20	26	0.20	350
2000	1.25	23	0.23	100

### ACTUATION DATA :

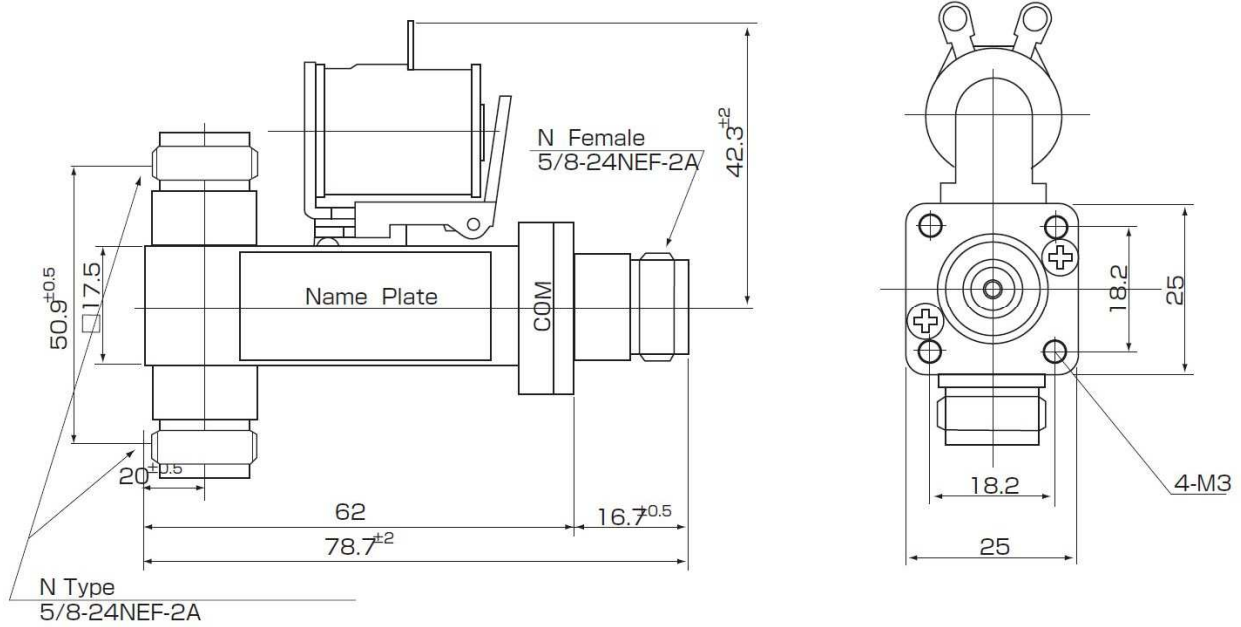
Pull In	.....	10 V DC - 14 V DC (12 V DC Nominal)
Drop Out	.....	3 V DC min.

### SWITCHING TIME :

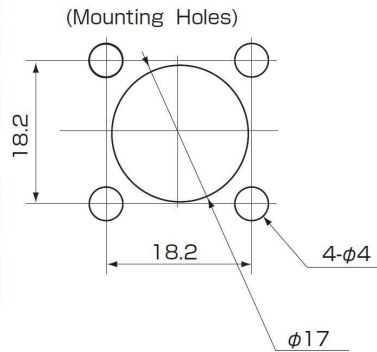
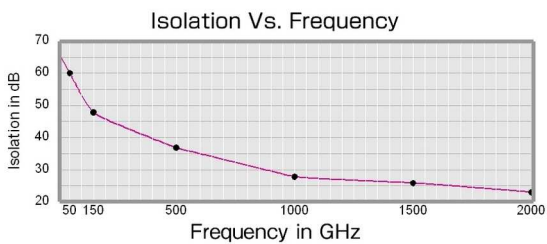
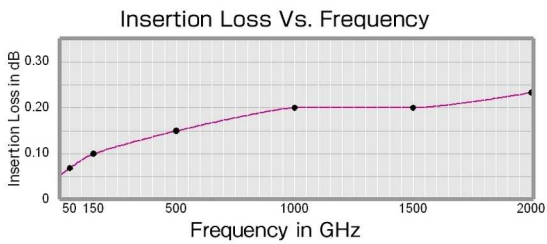
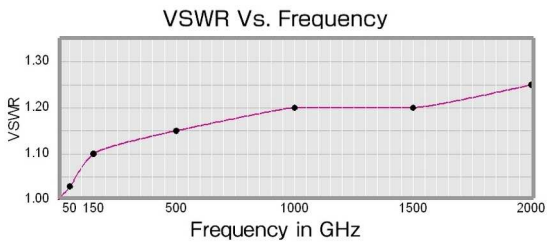
Pull In	.....	20 ms max.
Drop Out	.....	15 ms max.
Life Expectancy	.....	1.000.000 Operations min.

# Coaxial Relay CX-600N

## DIMENSIONS :



## Typical Operating Curves :



## Schematic:

